



TILT & LIFT 25 WF RTS CENTRAL TECHNICAL DATA MOTOR

DOC 144135		
TDST TILT & LIFT 25 WF RTS		
Based on SDEV-CLU-IMPS 61 R2		
Date	Index	Page
06/12/2018	000	1/2

Nominal voltage	12 VDC
Power supply tolerances	9V - 16,5V
Maximum distance between motor and power source	10 m if used with Power Supply 4 m if used with battery tube
Number of wires of the cable	2
Wire section	AWG24
Removable cable	No
Insulation class	Class III
Index protection rating	IP20 - For indoor use only
Temperature range (working)	0 °C to 60°C
Temperature range (storage)	-20°C to 80°C
Type of limit switch unit	Electronic, encoder based
Capacity of the LSU	100 revolutions
Repeatability	±5°
Protection against polarity reversal	Yes
Protection from axis stall	Yes
Autonomy	Please refer to abacus.
Life time	5 000 cycles; 2m high on a 20 tube diameter (CTS25 by Somfy)
Radio frequency	433,42 MHz
Radio protocol	RTS U80
Capacity of memory	12 transmitters, no sensors
Antenna	Wire 15cm, Must not be cut or lengthened
Service constraint	Antenna out out the headrail Load distribution: max difference 1/3 - 2/3 per output shaft
Radio range	200m free field (European remote control) 20m with 2 concrete walls to be passed through (European remote control) 50m free field (FCC remote control) 6m with 2 concrete walls to be passed through (FCC remote control)
Application	Venetian, cellular and pleated blinds
Interface drawings	For the shaft adapter and the headrail adapter see GEO128959.
Minimum distance between limits	1 turn

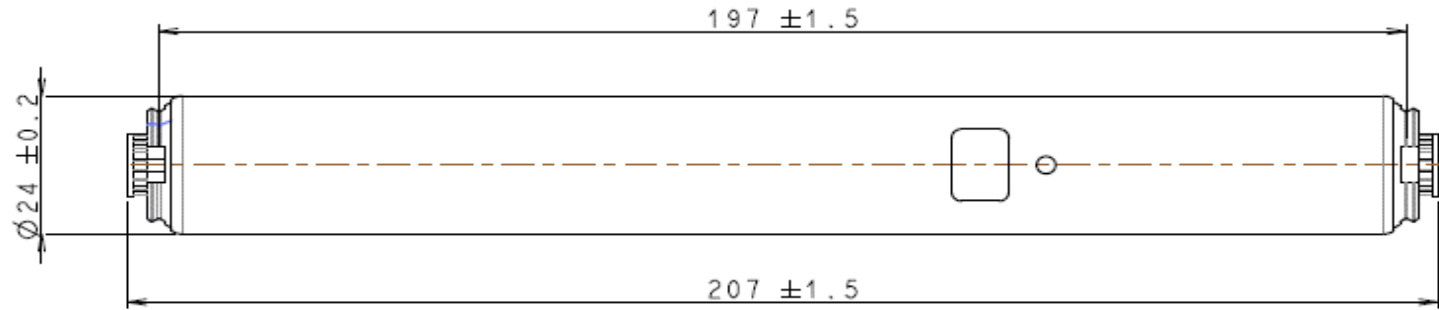
Designation	Nominal torque	Up speed at nominal torque*	Down speed at nominal torque*	Up Current at nominal torque*	Down current at nominal torque*	Max start current at nominal torque*	Stall torque	Current at stall torque	Current No load	Current Sleep mode ***	Physical dimensions	Weight	Typical Sound Level** at 30 rpm
	Nm	rpm	rpm	mA	mA	A	Nm	A	mA	µA	mm	g	dB(A)
TILT & LIFT 25 WF RTS CENTRAL	0,8	Adjustable 18-30 <small>Nominal 30rpm</small>	Adjustable 18-30 <small>Nominal 30rpm</small>	750	50	1,1	2,6	2,1	150	85	See next page	190	50
		±2	±2	±150	±25				±50	±15			

*nominal torque, nominal voltage & room temperature (25°C)

**Power Level: according to standards ISO 3741 in dB(A) ref 1pW, value ① at nominal torque (measurement between 20°C to 35°C)

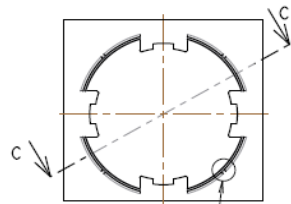
①: Highest typical value between UP direction and down direction (based on 10 samples).

*** Typical value without radioreception.

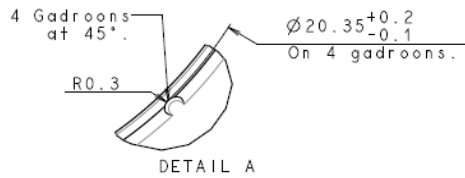
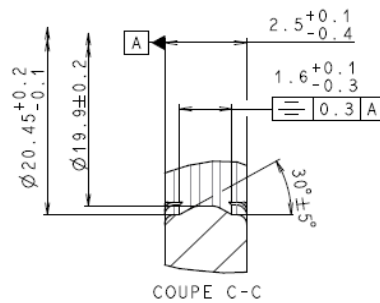


BRACKET INTERFACE

RECOMMENDED MATERIAL: POM DELRIN 100



VOIR DETAIL A



AXLE INTERFACE

